

HARRY CHARLES

Property Specialists



Whippendell Road, Watford, WD18 7QF

£1,450 Per month



**** AVAILABLE 25th JULY ****A well presented, modern two double bedroom ground floor apartment situated within this private modern development located with easy access to Watford town centre and transport links. The property comprising a spacious open plan reception with wooden flooring and neutral decor, a modern fully fitted kitchen with integrated appliances, two good size bedrooms both with built in wardrobes and a well-appointed family bathroom with shower over bath. Benefits include double glazing and off street parking. Council Tax Band D

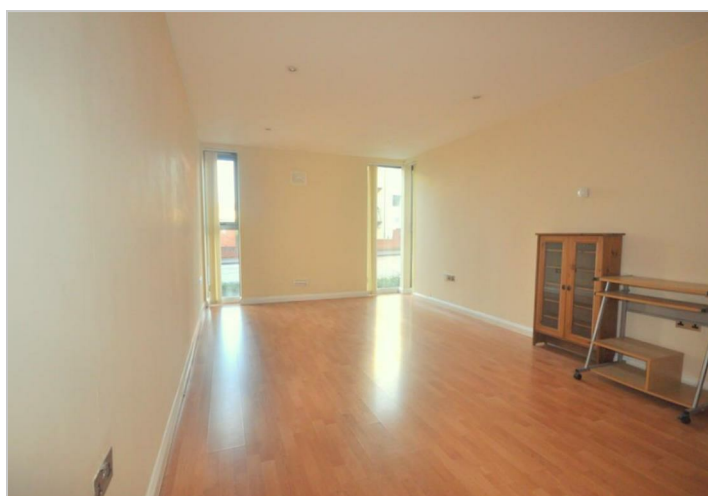
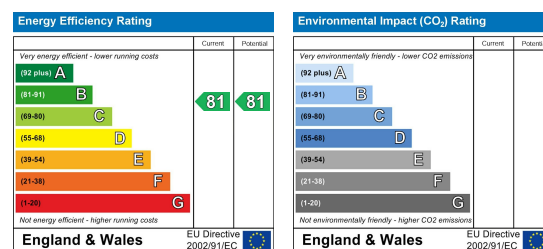


Additional Information

Area Map



Energy Efficiency Graph



These particulars, whilst believed to be accurate are set out as a general outline only for guidance and do not constitute any part of an offer or contract. Intending purchasers should not rely on them as statements of representation of fact, but must satisfy themselves by inspection or otherwise as to their accuracy. No person in this firm's employment has the authority to make or give any representation or warranty in respect of the property.